

DRONE MAPPING

FOR EARTHWORK AND CONSTRUCTION



Reduce Risk

Manage safety issues and comply with government regulations.



Improve Accuracy

Highly accurate volumetric analysis.



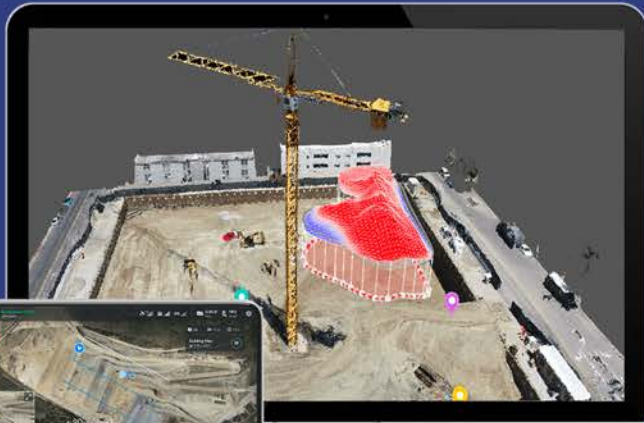
Increase Efficiency

Save time, improve communication. Consistent automated capture, every time.



Reduce Cost

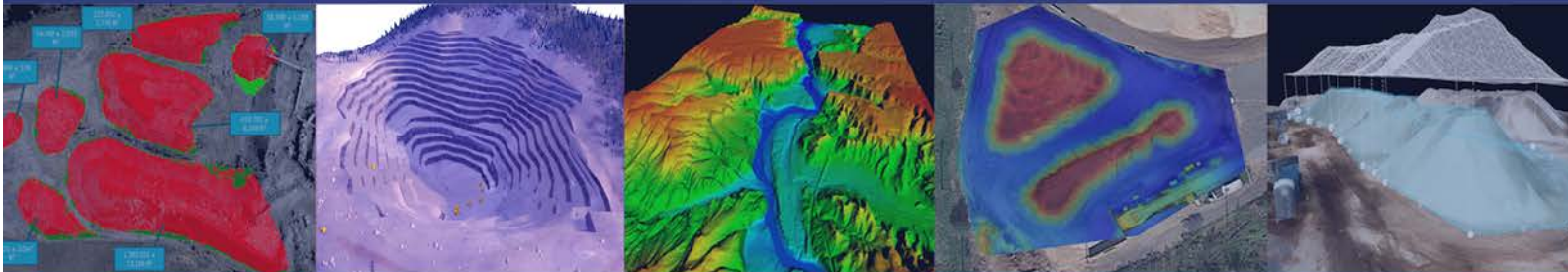
Prices starting at \$349 per Scan.



Earthwork Management

Expedite pre-construction site planning and design from bid to earthwork with survey-grade maps.

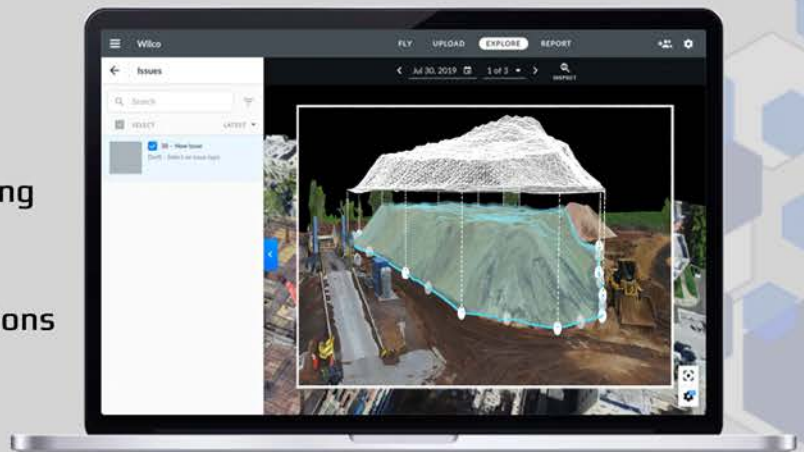
- Review your site in a 2D or 3D environment
- Overlay site plans on top of site scans
- Verify subcontractor work with automated cut/fill analysis and side-by-side comparisons



Improve Accountability

Create, document, and share a visual timeline with all stakeholders.

- Detect and correct plan deviations by comparing actual conditions to pre-construction designs
- Improve coordination with your team and subcontractors using a visual record of conditions
- Verify subcontractor work with automated cut/fill analysis and side-by-side comparisons



Get your **FREE** Quote Today!
info@aeronyde.com
+1(321) 622-8676

DRONE MAPPING

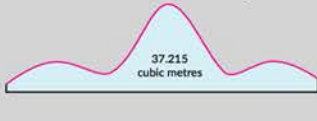
FOR EARTHWORK AND CONSTRUCTION

THE REASON AERIAL SURVEYS ARE

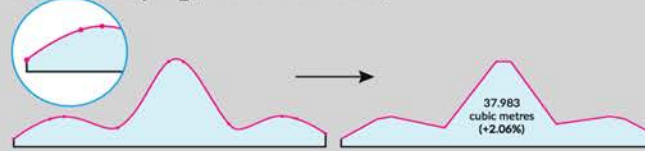
MORE ACCURATE

Where typical GPS surveys for stockpile volumes are measured in square meters per point, aerial surveying creates hundreds of points per square meter.

Theoretical Stockpile



GPS Surveying (The "Gold Standard")



Aerial Surveying



Our Service



Our FAA Licensed Pilots



Our Equipment



Our Insurance



Our Data Processing



Our FAA Authorizations

=

YOUR Report



Report Summary



- DATE CREATED ▾ LATEST ▾
- Takeoff Area
Area
- North Sawdust Mound
Volume
- South Sawdust Mound
Volume
- Site Area
Area



Title	
South Sawdust Mound	
April 30, 2020	
Cut	12383.3 y ³
Fill	-18.5 y ³
Volume	12364.8 y ³
Mass	3214.8 ton
Value	\$144,668.04
Area	0.694 acres

Title	
North Sawdust Mound	
April 30, 2020	
Area	3893 ft ²
Cut	595.3 y ³
Fill	-2.8 y ³
Volume	592.4 y ³
Mass	154 ton
Value	\$6,931.56

Material Name *
Sawdust

Material Density
520 lb/yd³

Currency USD (\$) Value 11.7 /yard³

Material Color

Totals South and North Sawdust Mounds	
Total Volume	12,957.2 y ³
Total Mass	3,807.2 ton
Total Value	\$151,599.60
Total Area	0.783 acres

*Material Density and Value assumptions may vary and directly impact Mass and Value calculations



Special Pricing

Daily Scans

\$50 for the 1st acre
+ \$15 per additional acre

BEST DEAL
90%
Discount

Weekly Scans

\$100 for the 1st acre
+ \$ 30 per additional acre

75%
Discount

Monthly Scans

\$200 for the 1st acre
+ \$ 60 per additional acre

64%
Discount

*Discount based on one 10-acre scan per year (\$2,550)
*Offer valid until 10/31/2020



Get your FREE Quote Today!
info@aeronyde.com
+1(321) 622-8676